



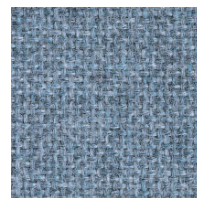
**FR701®
Style
2100**



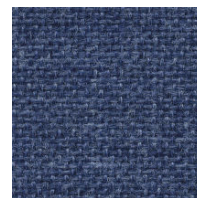
#130 Wheat



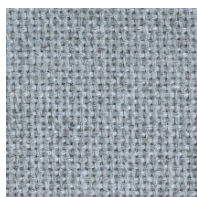
#144 Eggshell



#150 Wedgewood



#153 Baltic



#175 Crystal Blue



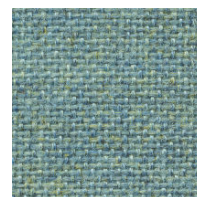
#238 Grey Mix



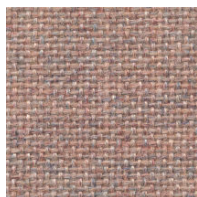
#298 Medium Grey



#380 Quartz



#381 Aquamarine



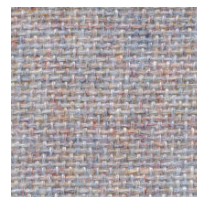
#390 Rose Quartz



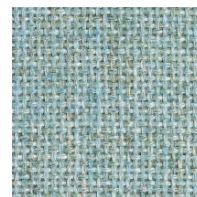
#394 Opal



#400 Cherry Neutral



#401 Blue Neutral



#402 Green Neutral



#403 Vanilla Neutral



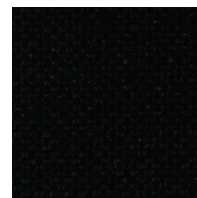
#404 Apricot Neutral



#405 Lavender Neutral



#406 Silver Neutral



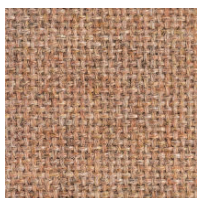
#408 Black



#418 Claret Accent



#420 Cobalt



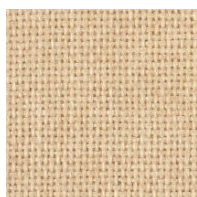
#422 Cinnabar



#423 Pumice



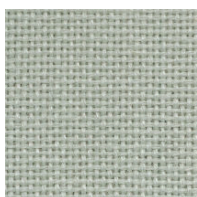
#424 Amethyst



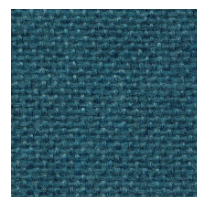
#460 Buff



#467 Blue Spruce



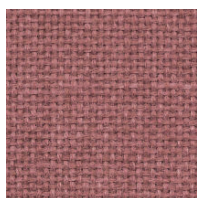
#468 Eucalyptus



#470 Ultramarine



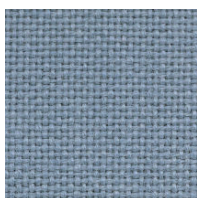
#471 Steel Grey



#475 Sienna



#481 Pearl



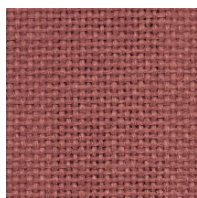
#486 Bayberry



#538 Silver Papier



#539 Blue Papier



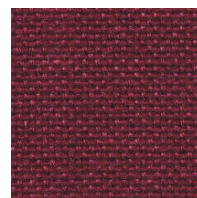
#545 Bronze



#549 Chrome Green



#553 Blue Plum



#556 Deep Burgundy



#561 Verte Papier



#747 Straw



#748 Bone



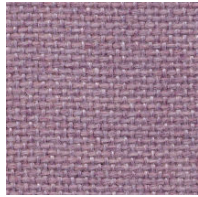
#749 Dune



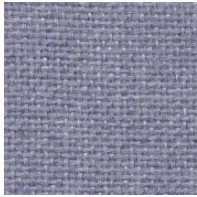
#750 Cement Mix



#751 Terra



#752 Lilac



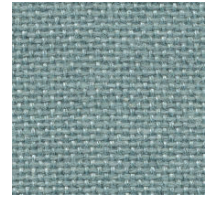
#753 Violet



#754 Light Moss



#755 Leaf



#756 Lake



#757 Stream



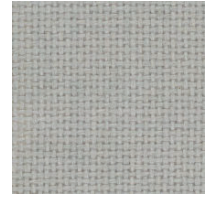
#758 Desert Sand



#792 Earth



#793 Chocolate



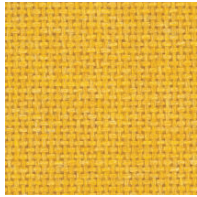
#794 Coin



#795 Flannel



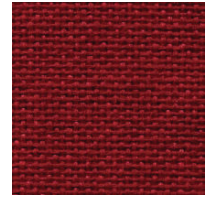
#796 Moleskin



#797 Sunshine



#798 Iris



#799 Red

Suggestions for Cleaning Panels w/ FR701-2100 Finish

The Guilford of Maine FR701-2100 fabric is constructed from 100% polyester fiber and is colorfast to the standard wet and dry cleaning procedures and is highly resistant to most spot cleaning solvents. Avoid excessive brushing or rubbing during cleaning practices to prevent fuzzing of the fabric surface.

Because of the low absorption properties of polyester, soil will tend to remain on the fiber surface and therefore, any soil is usually removed without need of vigorous treatment. To prevent overall soiling, frequent vacuuming or light brushing to remove dust and grime is recommended.

Oil or grease-type spots will respond to mild solvent or dry-cleaning agents. When spot cleaning with these types of products, follow instructions carefully and clean only in a well-ventilated room. Avoid any product which contains carbon tetrachloride or other toxic materials. The blotting technique, without rubbing, should be sufficient to remove spots.

For general dirt or grime spots, sponging with the foam from a mild detergent or upholstery shampoo should remove the accumulated dirt or grime spot. Room temperature solution should be sufficient. Rinse with a clean, dry sponge to remove traces of the water-based cleaning agent. The fabric will dry quickly. It is recommended to pretest a small area before proceeding to spot clean the fabric any further when spot cleaning with a water-based type cleaning agent.

**** Caution ****

When cleaning with either a water-based or solvent-based cleaning agent, DO NOT SATURATE fabric as this may dissolve or loosed fabric adhesives.